

Extremely tough

Glamox D70-R195 SOLID G2





Compact, simple, yet powerful

The simple, clean design of the D70-R195 SOLID G2 is complemented by a robustness that allows this downlight to withstand some of the toughest working conditions in various extreme environments. Its impressive technical characteristics include a C4 corrosion resistance rating and IP65 ingress protection in addition to a high colour rendering index and a high useful lifetime. DALI connection via external sensors is also optionally available, and versions with a lower IP are equipped with LINECT quick connectors.

Exceptional durability for challenging applications

This luminaire features a silver matte reflector and a body and heatsink made of die-cast aluminium. Tamper-proof screws were used in 3 solid screw fixing points to secure the trim ring with a cover built of incredibly tough PC hardened plastic. Combined with IK10 impact protection, this makes the D70-R195 SOLID G2 safe to use in challenging anti-ligature applications in custodial areas like psychiatric wards, detention centres and hospitals.

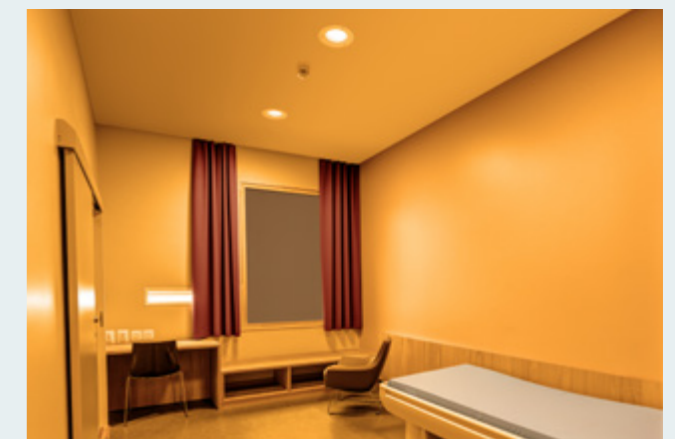
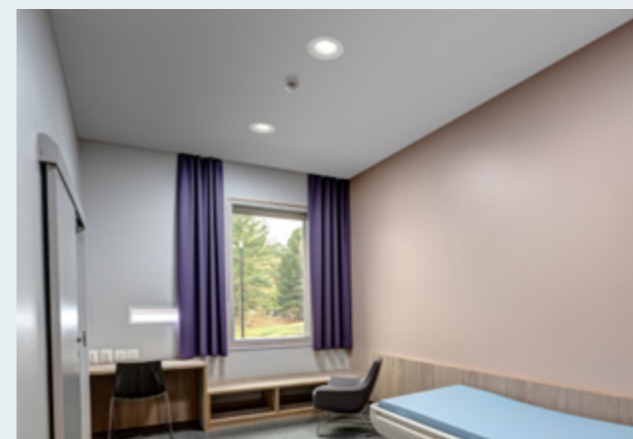


The D70-R195 SOLID G2 is the toughest member of the D70 G2 family.

Ergonomic lighting in operating theatres

This luminaire has a CRI of 80 or 90 and can be equipped with RGB-W lighting, which is highly useful in cleanroom applications such as operating theatres. The use of coloured light can be beneficial for surgeons who rely on monitors during surgery. Ergonomic lighting in the form of dynamic blue or green light in the field

of view is used to enhance monitor contrasts. This, in turn, reduces the eye strain for the surgeons. Human-centric lighting may also be used to create a relaxing environment for patients before or after surgery.



Relaxing light that can decrease the need for using medication

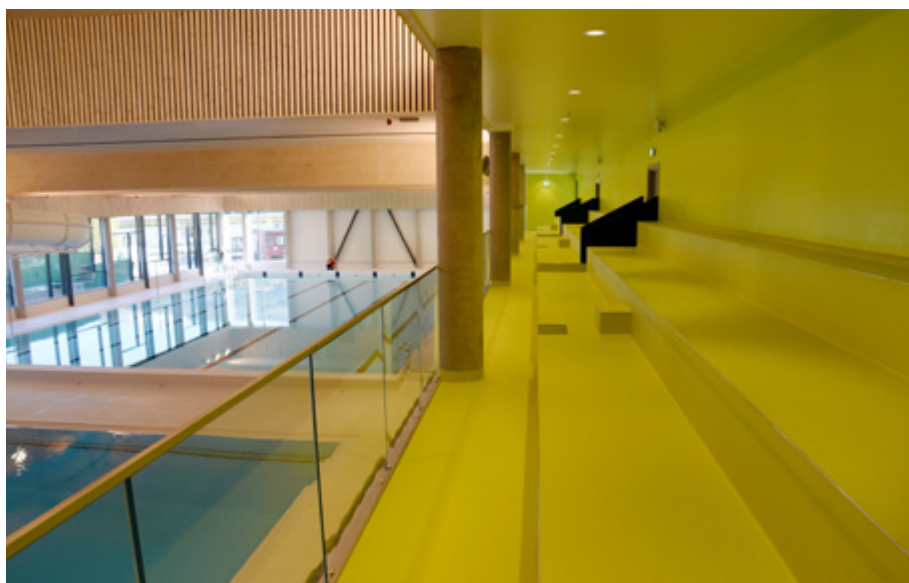
Warmer light hues have been proven to have a calming effect on hospital patients, so the D70-R195 SOLID G2 can be a valuable tool in psychiatric facilities and elderly care centres, adding to its wide range of potential uses.

Research shows that eliminating the blue components in light can have a positive effect on certain groups of psychiatric patients by mitigating symptoms such as manic episodes.

Outdoor and swimming hall use

The D70-R195 SOLID G2 is available with a high ingress protection rating of IP65 and variants with a higher corrosion class are a great choice for outdoor use and in indoor swimming halls. Various lumen outputs can be

achieved depending on the ceiling installation height. RGB-W light can be used to create an architectural effect on façades, further enhancing the attractiveness of any facility.



For more info, see www.glamox.com